

Thermotec PB03-W

Specifications

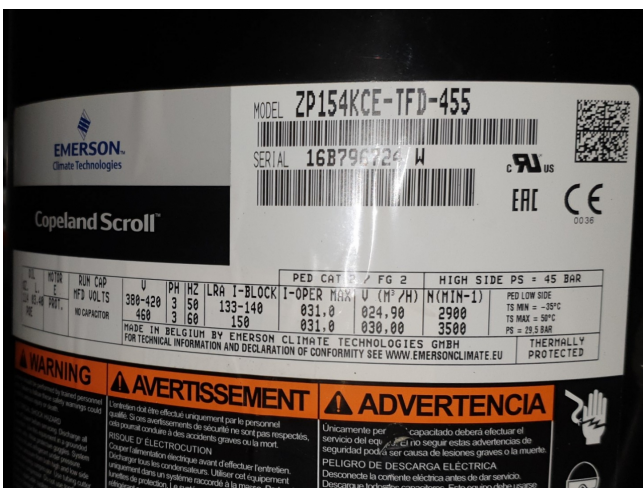
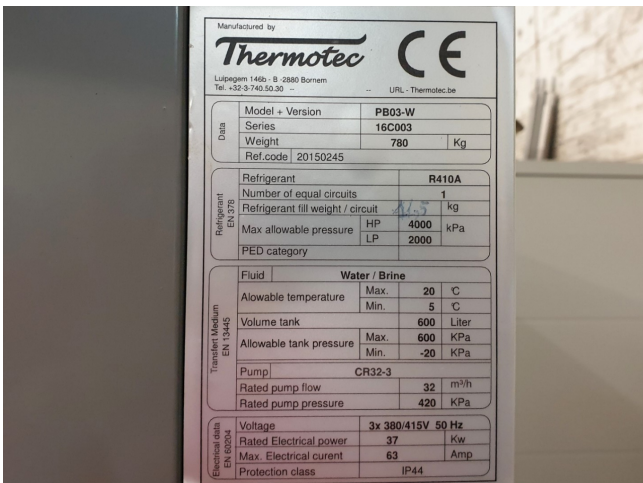
Merk	Thermotec
Type	PB03-W
Product type	Water Cooled Chiller
Capaciteit kW	69,2
Capaciteit Tons	19,7
Koudemiddel	Freon
Koudemiddel Type	R410A
Liquid buffer tank	✓
Pump	✓
Gewicht in kg.	780
Compressor(s) type & model	Copeland ZP154KCE-TFD-455 (x2)
Display	Carel pco5
Opmerkingen	1x pump CR32-3 with 32 m3/h
Opmerkingen	YOB 2016
Remarks	tank volume 600 Liter
Stock	1



Description

Used Thermotec PB03-W

Zo goed als nieuwe watergekoelde koelmachine Thermotec model PB03-W serie 16C003 gebouwd in 2016. Compleet met 2 Copeland ZP154KCE-TFD-455 scroll compressoren. Vloeistofbuffertank 600 ltr en een pomp CR32-3 met 32 m³ / h.





97702205	3~MOT	MG132SB2-38FF265-H3
	P ₂ 7,50 kW	2 - pole/ S1 No.85U17522
	50Hz Δ/Y	U 380-415/660-690 V
		I ₁ 14,4-14,0/8,30-8,10A
		I _{max} 15,8-15,4/9,15-8,90A
	cos φ 0,88-0,82	n 2910-2920min ⁻¹
	Eff. IE3 90,1%	
	60Hz Δ/Y	U 380-480/660-690 V
		I ₁ 14,2-12,0/8,20-8,10A
		I _{max} 15,6-13,2/9,00-8,90A
	cos φ 0,90-0,82	n 3490-3530min ⁻¹
	Eff. IE2 89,5% - IE3 90,2%	

Type	CR32-4 A-F-A-E-H00E					
Model	B96122013P11619					
IE3/IE2/IE1	f	50	Hz	P ₂	7,50	kW
	n	2919	min ⁻¹	H _{max}	77.8	m
	Q	30	m ³ /h	H	59.1	m
	p _{max} /t _{max}	16/120	bar/°C	CCW		
Serial No.	0008	Made in Denmark				
		CE EAC		GRUNDFOS		
MEI ≥	0.7	η _p (%)	76,1	DK-8850 Bjerringbro, Denmark		

